



SPORTTREK TOURING EDITION 5

Luxury Fifth Wheels



Designed for campers, by campers.

SPORTTREK TOURING FIFTH WHEELS

Get inspired to cook up something fancy in the residential kitchen, complete with solid surface countertops, a 18" dishwasher, a 21" oven w/cooktop and glass cover for even more counter space, and a huge hutch/pantry with a wine rack. (STTF353VIK shown)



Experience unparalleled luxury on the road with Venture RV's newest masterpiece, the SportTrek Touring Edition fifth wheel. Boasting industry-leading storage, opulent amenities, and tailored floorplans, this is the evolution of RV travel that enthusiasts have eagerly awaited.

KEY FEATURES:

- 2-Fireplaces
- New Versa-seat converts into a workstation
- BAL Huck Bolted Frame
- 185 cu ft of pass thru storage
- Outside Kitchens w/40" TV



Overhead storage abounds throughout the living area, maximizing storage space. Luxurious theater seating sits directly across from the impressive entertainment center for a perfect view of the game or your favorite show (VBF). (STTF353VIK shown)



Enjoy morning coffee or a good book in the cozy bedroom window seat with easy access storage. (STTF353VIK shown)



The impressive entertainment center includes a 50" LED Smart TV, JBL Sound Bar with Bluetooth, a fireplace, and a wealth of storage options. (STTF353VIK shown)

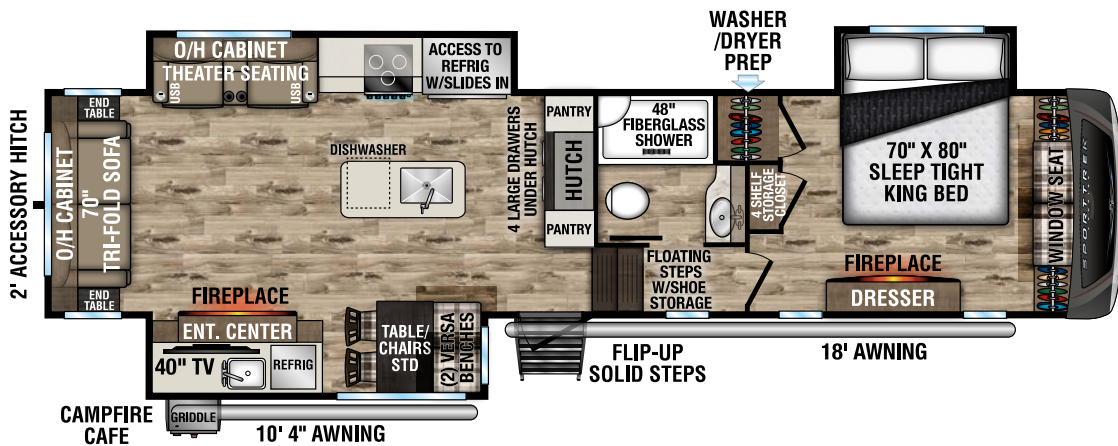


The dinette features two dinette chairs with seat storage, plus two Versa benches that can be converted into desks or dinner trays. (STTF353VIK shown)

NEW

STT353VIK

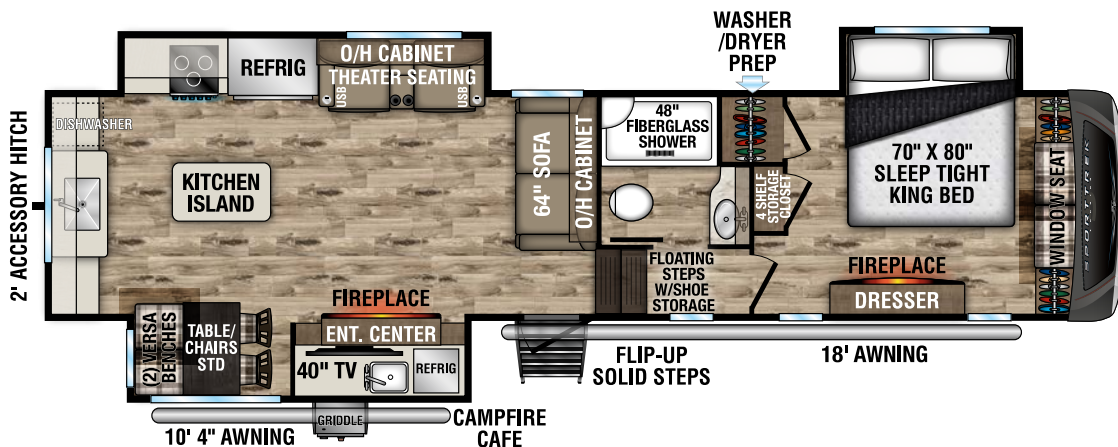
UVW - 11,210
 Exterior Length - 37'
 Sleeps - 4



NEW

STTF353VRK

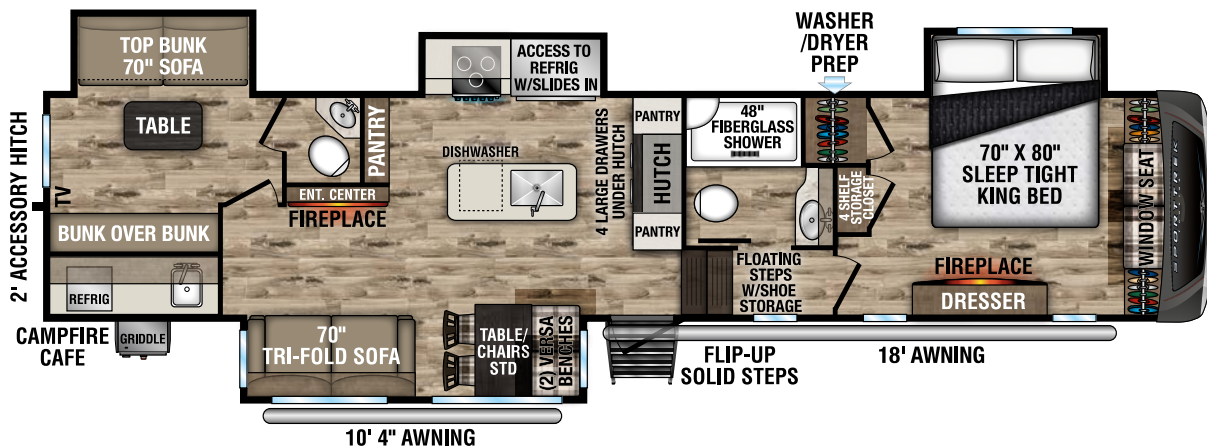
UVW - 11,260
 Exterior Length - 37'
 Sleeps - 4



NEW

STT354VBH

UVW - 12,150
 Exterior Length - 39' 10"
 Sleeps - TBD



SPORTREK TOURING EDITION FIFTH WHEELS



Cozy X 2 – standard 30-inch bedroom fireplace produces 5,000 BTUs of electric heat, plus an additional standard 30-inch living room fireplace provides ambiance throughout the trailer.



Cleanup is made easy with the 18" GE stainless steel profile dishwasher, standard with every floorplan.



Solid surface countertops and stainless steel farmers sink with high-rise oil rubbed faucet w/sprayer.



Don't miss any opportunity to celebrate or unwind. The STTF353VIK features a built in wine rack to keep your favorites on hand.



Adjustable pantry shelves.



Safe Tek Box hidden charging station and valuables storage.

Flush-mounted 21-inch stove with glass cover and accent lighting.



With the massive 16W 12V fridge, there's plenty of space for snacks, beverages, ingredients, and leftovers.

STTF353VIK

STTF353VRK

STT354VBH

UVW (Unloaded Vehicle Weight)*	11,210	11,260	12,150
Dry Hitch Weight*	2,150	2,200	2,460
Dry Axle Weight*	9,060	9,060	9,690
CCC (Cargo Carrying Capacity)	1,785	1,735	1,845
GVWR	12,995	12,995	13,995
Exterior Height with A/C	13' 1"	13' 4"	13' 4"
Exterior Width	96"	96"	96"
Exterior Length**	37'	37'	39' 10"
Refrigerator (Cubic Feet)	15.6	15.6	15.6
Water Heater Cap. (On-Demand Tankless)	***	***	***
Fresh Water Capacity (Gallon)	76	76	76
Black Water Capacity (Gallon)	50	50	100
Gray Water Capacity (Gallon)	50	100	50
LP Gas Capacity (Lbs.)	60	60	60
Furnace BTUs (1,000s)	30	30	30
Tire Size	16"	16"	16"
Awning	18'/10' 4"	18'/10' 4"	18'/10' 4"

*This weight reflects the rolling average unit weight for each model. Your trailer weight will vary according to optional equipment.

**Exterior length is measured from rear of bumper to leading edge of coupler.

***Infinite supply.

EXTERIOR

- BAL NXG Huck -bolted Drop frame
- BAL 4-Point Electric Leveling System
- BAL Accessory Hitch w/300# hitch and 3,000# Towing (w/4-pin plug)
- Best in Class 185 cu ft of Pass Thru Storage
- Heated and Enclosed One-piece Underbelly
- Motorhome Style Slam Latch Baggage Doors
- Mor-Ryde Rubber Pin Box
- Mor-Ryde CRE 3,000 Suspension System
- Easy Access Convenience Center
- Outside Shower w/Hot and Cold Water (Located in Docking Area)
- Laminated Rear Wall and Sidewalls
- Fiberglass Slideout Endwalls
- Frameless Tinted Windows
- High Gloss Fiberglass Front Cap w/Automotive Paint
- Automotive Front Windshield Integrated Into Front Cap
- Tufflex PVC Roofing w/Limited Lifetime Warranty
- Steel Heavy Duty Rear Ladder
- Rear Back Up Lighting
- Dexter Heavy Duty Axles
- Goodyear Endurance Tires
- Mor-Ryde Flip-up Step w/double Top Step
- Aluminum Wheels With Undermount Full Size Spare
- Friction Hinge Entry Door with Screen Shot and Pet Defender Screen Door
- Rear Observation Camera Prep
- Battery Disconnect Switch
- 50 Amp Service with Framed and Pre-wired For 2nd A/C
- Electric Awning with LED Lighting
- Motorhome Legless Awning with LED Lighting and Windsensor (on Slideout) (VBF)

INTERIOR

- 5/8" Tongue and Groove Plywood Floors
- Blackout Roller Shades
- 2x 5,000 BTU Fireplaces (1-Living Room and 1-Bedroom)
- Decorative Crown Molding (Living Room)
- Solid Hardwood Cabinet Doors/ Drawers, Heirloom Maple and Antique White w/Glazing
- Steel Trimmed Entry Door w/Venture Header
- Dinette Table w/2-Chairs with Seat Storage and 2-Versa Benches

KITCHEN FEATURES

- Stainless Steel Undermount Farmers Sink
- High-Rise Oil Rubbed Faucet w/Sprayer
- Solid Surface Countertops
- Antique White w/Oil Rubbed Glazing
- Pantry w/Adjustable Shelves
- Wine Rack

APPLIANCES & UTILITIES

- 18" GE Stainless Steel Profile Dishwasher
- Fogatti On-demand Tankless Water Heater
- 15 K BTU A/C w/Hepa Filter and RV Airflow System 40% more Efficient
- 30K BTU Furnace
- 40" or 50" LED Smart TV (VBF)
- JBL Sound Bar w/Bluetooth
- 21" Furrion Oven w/Cooktop and Glass Cover
- 16 cu ft 12V Double Door Refrigerator
- Outside Kitchen featuring 40" LED Smart TV w/Swing Arm Bracket, JBL Flip Speaker w/Bluetooth, 3 cu ft. Refrigerator, Lodge Griddle, Stainless Steel Sink, Spray hose, adjustable faucet w/Hot and Cold Water
- Washer/Dryer Prep
- 2-30# LP Tanks
- 200W solar panel w/ 30 amp MPPT controller

BEDROOM FEATURES

- Maximum Storage Design 4-closets
- 2-Blanket Storage Areas and 1-Dresser w/Hidden Storage
- Serta 70"x 80" King Mattress w/Under The Bed Storage
- Cushioned Window Seat with Storage

Blake Décor

Heirloom Maple

- Western Pine Board Decorative Accent Walls
- CPAP Sized Shelf w/110 Outlet
- Cable TV and Satellite Ready
- WIFI Prep

BATHROOM FEATURES

- 30"x48" Residential Fiberglass Shower w/Shelf, Seat and Glass Door
- Sky Light
- Motion Activated Lighting
- Porcelain Foot Flush Toilet
- Residential Sized Medicine Cabinet

WEATHER SHIELD

- Wrapped Radiant Foil
- Heated Holding Tanks
- PVC Roof Membrane Reflects the Suns UV Rays
- Heat Vent In Pass-thru Storage

SAFETY

- Fire Extinguisher
- Break Away Switch
- Carbon Monoxide Detector
- Smoke Detector
- LP Leak Detector
- GFI Receptacles

OPTIONS

- 13,5K A/C in Bedroom w/Hepa Filter and RV Air Flow System 40% More Efficient
- Bedroom 40" LED Smart TV w/swing arm
- MaxxAir Fan
- 1200Watt Inverter

Doe Décor

Antique White

EXTERIOR FEATURES

Two awnings for maximum coverage



Outside kitchen includes a 40" LED smart TV w/swing arm bracket, JBL flip speaker w/bluetooth, 3 cu. ft. refrigerator, Lodge griddle, sink with hot and cold water.



2-Inch accessory hitch is integrated into the frame with 250# capacity.

Experience enhanced privacy, comfort, and a touch of luxury with our deep-tinted, frameless windows. They elevate the aesthetic and help maintain a cool and comfortable interior climate, letting you relax in peace and privacy.



dicor products
TUFFLEX™
PVC ROOFING

- HIGH SOLAR REFLECTIVITY & THERMAL EMISSIONS
- KEEPS YOUR RV COOL ALL DAY
- PUNCTURE RESISTANCE & BONDING STRENGTH GIVES YOUR RV MAXIMUM PROTECTION
- SUSTAINABLE MATERIAL ENGINEERED TO LAST & 100% RECYCLABLE

LIFETIME WARRANTY

RV COMPOSITE PANELS
AZDEL ONBOARD®

NXG FRAME
The Next Generation in RV Frame Technology

BAL
BY INORCO INDUSTRIES INC.



VENTURE

LevelMatePRO
Bluetooth Vehicle Leveling System

LevelMate PRO lets you level your unit on the first try! This feature calculates and displays the height required to achieve a perfectly level position.

WEATHER-SHIELD
FORCED HEAT & ENCLOSED UNDERBELLY

SportTrek Touring's Weather Shield features a radiant foil barrier, forced heat, enclosed underbelly, and enclosed gate valves.



SPORTTREK TOURING CONSTRUCTION



VENTURE

SPORTTREK TOURING



985 N 900 W | Shipshewana, IN 46565 | www.venture-rv.com

Due to continual research and advances, manufacturer reserves the right to change specifications, design, price, and equipment without notice, and assumes no responsibility for any error in this literature.

Some items shown are not included as standard or optional equipment.

©2024 Venture | 4/15/24 | web