



# SPORTTREK TOURING EDITION

Luxury Travel Trailers



*Designed for campers, by campers.*



# SPORTTREK TOURING EDITION

Touring's kitchens are elegant, yet functional, and exhibit all the features of your home kitchen. Island units boast an appliance hutch, and all offer generous storage, tilt-out utility tray and waste basket storage. (STT343VIK shown)

SportTrek Touring Edition is all you could desire and more, with modern farmhouse cabinetry and residential-size appliances.

## KEY FEATURES:

- Luxury travel trailer with modern farmhouse design
- All floorplans have bedroom slideouts, including seven with king beds
- Solid surface kitchen countertops
- Automotive painted full fiberglass front cap with panoramic automotive front window
- Nine floorplans with outside kitchens
- Two fireplaces producing up to 10,000 BTUs of electric heat

SportTrek Touring STT343VIK, shown in Doe Décor, boasts an island kitchen with solid surface countertop and extremely comfortable seating accommodations.



Living spaces are a dream, with 30-inch fireplaces in the living room and master bedroom. Smart TVs are either 40-inch or 50-inch with JBL sound bar, depending on floorplan (STT343VIK shown).

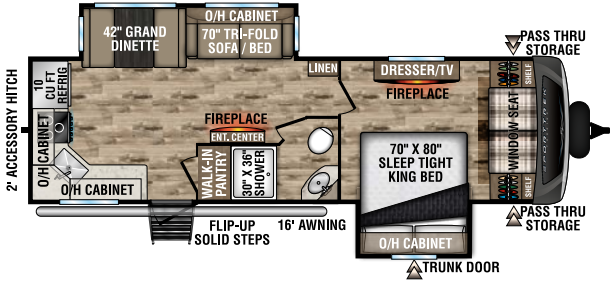


Bedrooms offer barn-style door(s), storage galore, upgraded Serta mattress, USB and 110V access above the bed, CPAP-sized shelf with 110V outlet, and TV/satellite connections. In addition, two gas struts assist in lifting the bed to access under-bed storage. Washer/dryer prep in most models. (STT343VIK shown)



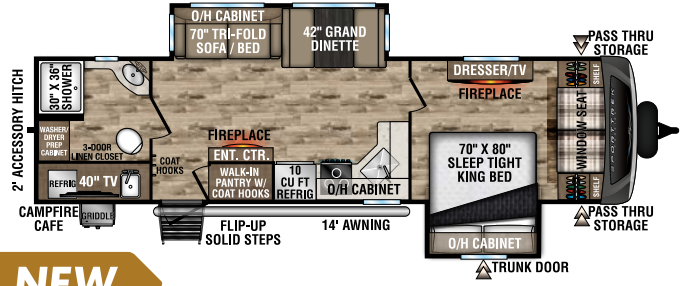
Most models feature a cozy window seat in the master bedroom, with additional storage under the bench to maximize the space. (STT343VIK shown)

# SPORTREK TOURING EDITION FLOORPLANS



## STT272VRK

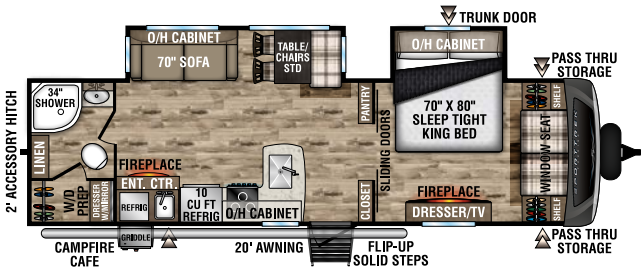
UVW – 7,920 lbs. | Exterior Length – 31' 6" | Sleeps – 6



**NEW**

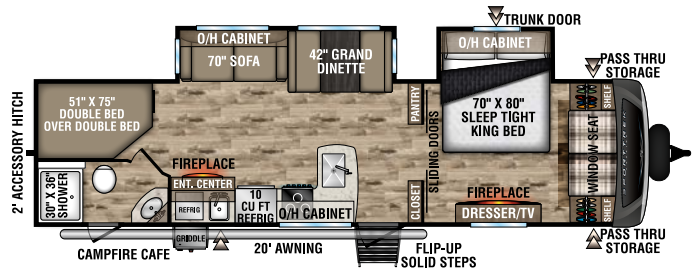
## STT292VRB

UVW – 8,020 lbs. | Exterior Length – 34' 8" | Sleeps – 6



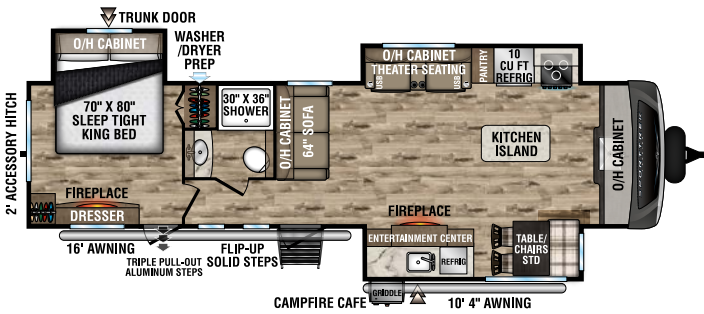
## STT302VRB

UVW – 7,610 lbs. | Exterior Length – 33' 3" | Sleeps – 4



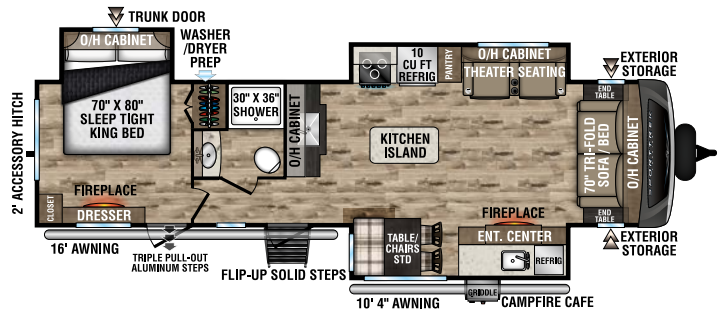
## STT312VBH

UVW – 7,980 lbs. | Exterior Length – 35' 9" | Sleeps – 10



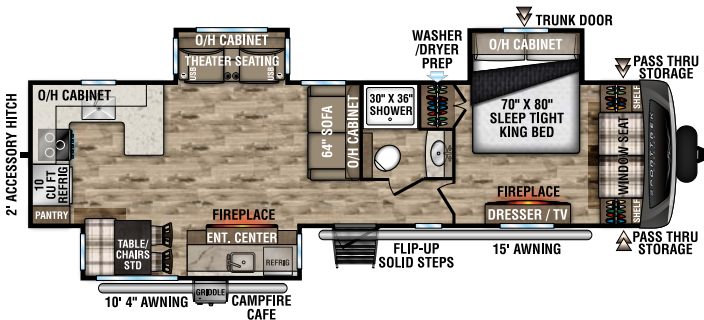
## STT333VFK

UVW – 9,040 lbs. | Exterior Length – 36' 8" | Sleeps – 4



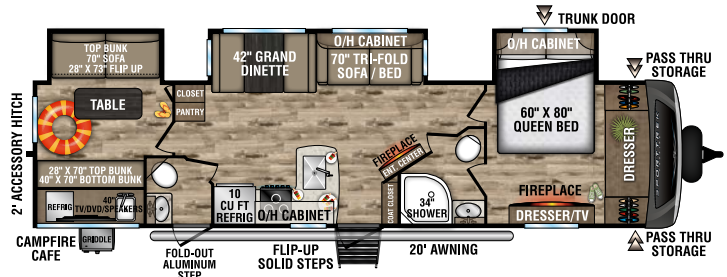
## STT333VMI

UVW – 8,890 lbs. | Exterior Length – 36' 8" | Sleeps – 4



## STT336VRK

UVW – 8,970 lbs. | Exterior Length – 37' 8" | Sleeps – 4

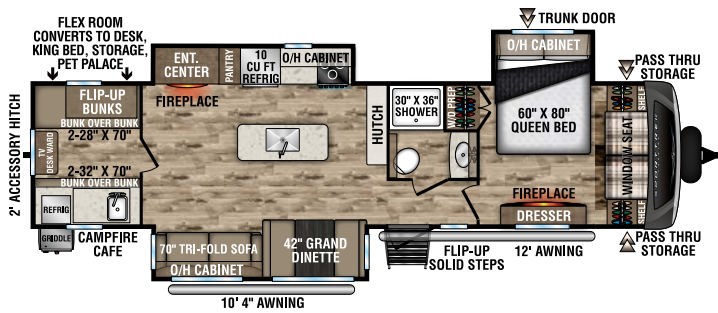


## STT343VBH

UVW – 9,040 lbs. | Exterior Length – 37' 8" | Sleeps – 11

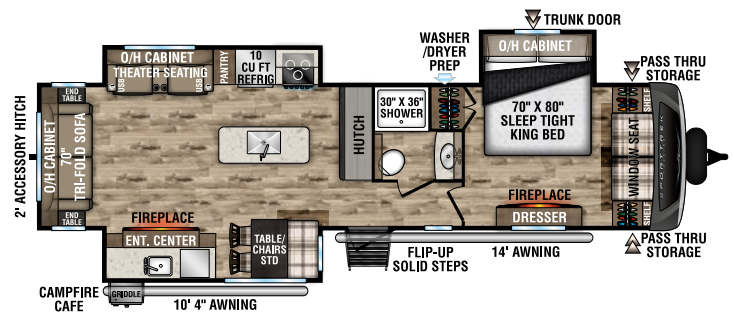


# SPORTREK TOURING EDITION FLOORPLANS



## STT343VIB

UVW – 8,950 lbs. | Exterior Length – 38' 2" | Sleeps – 11



## STT343VIK

UVW – 8,970 lbs. | Exterior Length – 37' 5" | Sleeps – 4



10 CU FT double-door refrigerator with antique white cabinet front.



Flush-mounted 21-inch stove with glass cover and accent lighting.



Sink cover drains food and dishes, and rolls out of the way for sink use.



Cozy X2 – standard 30-inch bedroom fireplace produces 5,000 BTUs of electric heat, plus an additional standard 30-inch living room fireplace provides ambience throughout the trailer.

Safe Tek Box hidden charging station and valuables storage.



Pantry provides tons of storage with adjustable shelves.



Tri-fold sofa is easy to convert and comfortable, whether used as a sofa or a bed (VBF).



Theater seating w/heat, massage & USB ports (VBF).

	STT272VRK	STT292VRB	STT302VRB	STT312VBH	STT333VFK	STT333VMI	STT336VRK	STT343VBH	STT343VIB	STT343VIK
UVW (Unloaded Vehicle Weight)*	7,290	8,020	7,610	7,980	9,040	8,890	8,970	9,040	8,950	8,970
Dry Hitch Weight*	850	910	940	950	1,120	1,180	1,150	1,210	1,210	1,150
Dry Axle Weight*	6,440	7,110	6,670	7,030	7,920	7,710	7,820	7,830	7,740	7,820
CCC (Cargo Carrying Capacity)	1,975	1,235	1,670	1,360	1,760	1,920	1,825	1,755	1,838	1,815
GVWR (Gross Vehicle Weight Rating)	9,265	9,255	9,280	9,340	10,800	10,810	10,815	10,795	10,788	10,785
Interior Height	82"	82"	82"	82"	82"	82"	82"	82"	82"	82"
Exterior Height with A/C	11' 4"	11' 4"	11' 4"	11' 4"	11' 6"	11' 6"	11' 6"	11' 6"	11' 6"	11' 6"
Exterior Width	96"	96"	96"	96"	96"	96"	96"	96"	96"	96"
Exterior Length**	31' 6"	34' 8"	33' 3"	35' 9"	36' 8"	36' 8"	37' 8"	37' 8"	38' 2"	37' 5"
Refrigerator (Cubic Feet)	10	10	10	10	10	10	10	10	10	10
Water Heater Cap. (On-Demand Tankless)	***	***	***	***	***	***	***	***	***	***
Fresh Water Capacity (Gallon)	45	45	45	45	45	45	45	45	45	45
Black Water Capacity (Gallon)	32	32	32	32	32	32	32	64	32	32
Gray Water Capacity (Gallon)	64	64	64	32	64	32	64	64	32	32
LP Gas Capacity (Lbs.)	60	60	60	60	60	60	60	60	60	60
Furnace BTUs (1,000s)	30	30	30	30	30	30	30	30	30	30
Tire Size	15"	15"	15"	15"	15"	15"	15"	15"	15"	15"
Awning	16'	14'	20'	20'	16'/10' 4"	16'/10' 4"	15'/10' 4"	20'	12'/10' 4"	14'/10' 4"

\*This weight reflects the rolling average unit weight for each model. Your trailer weight will vary according to optional equipment.

\*\*Exterior length is measured from rear of bumper to leading edge of coupler.

\*\*\*Infinite supply.



## 1.5 ELITE PACKAGE

200W Solar Panel w/30A Controller  
JBL Sound Bar  
JBL Flip Bluetooth Speaker (Exterior)  
Glass Shower Door  
Blackout Roller Shades  
Tankless Water Heater  
Extended Grab Handle  
Laminated Rear Wall  
Modern Farm House Design w/Hand Glazed Cabinet Doors  
Pre-Wired Tire Monitor System  
King WiFi Prep  
CPAP/Cell Phone Shelves in Bedroom  
Entry Door w/Clearview Window  
Large Single Bowl Stainless Steel Undermount Sink w/Cover/Dish Drying Racks  
Pull-Down Spring Faucet  
Western Pine Board Accent Walls  
40"/50" Smart TV w/Swing Arm (VBF)  
Venture Level Mate Pro System  
Tucked Bumper w/2" Accessory Hitch  
Heirloom Comforter w/Pillow Package  
Oval Stainless Steel Bath Sink  
Serta Memory Foam Mattress  
Venture Control Center w/Bluetooth Connectivity  
10 CU FT 12V Refrigerator  
Venture Cutting Board  
Furrion 21" Oven  
Live Edge Accent Tops  
Barn Door Passage Doors  
Residential Furniture Upgrade  
Motion-Activated Bathroom Nightlight  
Rear Back-up Lights  
Pet Defender Screen Protector  
Fiberglass Slideout Endwalls  
Beauflor Slideout Floors (no carpet)

## WEATHER-SHIELD PACKAGE (MANDATORY)

Forced-Air Heated & Enclosed Underbelly  
Enclosed, Heated Gate Valves  
Residential Fiberglass Insulation  
Radiant Foil Insulation  
Radiant Foil Insulation Wrapped Tanks  
Reflective PVC Roof Membrane w/Limited Lifetime Warranty  
High-Output A/C Ducting  
Utility Docking Station  
RV Airflow provides 40% more airflow for your A/C

## SPORTREK TOURING PACKAGE (MANDATORY)

Azdel Laminated Sidewalls  
Automotive Panoramic Front Window  
Window Seat (most models)  
Friction Hinge Entry Door  
Interior Entry Door Motion Light  
Motion Activated Pass-thru Storage Light  
5/8" Tongue & Groove Plywood Floor Decking  
NXG Huck Bolt Frame  
EZ Lube Hubs  
Undermount Spare Tire  
Rear Ladder  
Walkable Roof  
Hot & Cold Outside Shower  
Black Tank Flush System  
Furrion Marine Grade Detachable Power Cord  
Prewired for Backup Camera  
Stabilizer Accent Lighting  
15K BTU A/C  
50A Service w/2nd A/C Prep  
LED Lighted Power Awning  
Keyed Alike Key System  
Battery Disconnect  
3-Burner Hi-Output Range w/Flush-Mount Glass Cover  
Microwave w/Turn Table  
Safe-Tek Hidden Storage w/Charging Center  
82" Interior Ceiling  
Tru Flush-Floor Main Slideouts, 72" Slideout Height  
Full-Extension Ball Bearing Drawer Guides

## EXTERIOR LUXURY PACKAGE (MANDATORY)

Painted Fiberglass Front Cap With Integrated LED Light  
Upgraded Graphics Package  
BAL 5.1 Lighted Power Tongue Jack & Independent Electric Stabilizer Jacks  
Tinted Frameless Windows  
Slam-Latch Baggage Doors w/Magnetic Catches

Blake Décor

Aluminum Flip-up Solid Step  
Venture Bottle Opener/Dog Tie Down  
30# LP Tanks w/Cover  
Screen Shot Screen Door

## INTERIOR LUXURY PACKAGE (MANDATORY)

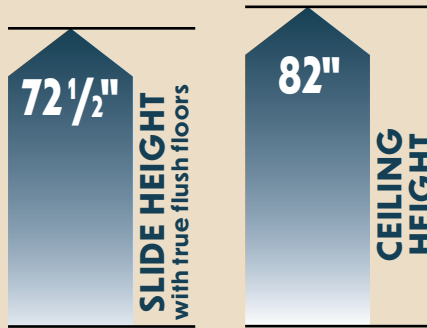
Solid Surface Kitchen Countertops  
Designer Valances w/Roller Shades  
Solid Hardwood Cabinet Doors & Drawer Faces  
Motion Activated Interior Entry Light  
Beauflor Wood Plank Flooring w/7-yr Limited Warranty  
Porcelain Foot-Flush Toilet  
Deluxe Tri-Fold Sofa & Theater Seats (VBF), King Bed Master Suite (Queen 343VBH/VIB)  
Washer & Dryer Prep (VBF)  
Heat & Message in Theater Seating (VBF)  
(2) 30" Frameless Fireplaces

## OPTIONS

Goodyear Tire Upgrade (Mandatory)  
Booth Dinette (Std. on 272VRK & Bunk Models)  
Table, (2) Chairs/Bench (Bunks & 272VRK only, STD on other models)  
2nd A/C (Ducted 13.5K in Master Bedroom)  
1,200 Watt Inverter  
\*Venture Level Mate Pro System  
\*40" Smart TV w/Swing Arm Bracket (272, 292, 302, 312, 343VBH/VIB)  
\*50" Smart TV w/Swing Arm Bracket (333s, 336, 343VIK)  
King "U" Sofa (Super-Slide Models only)  
Theater Seating IPO Tri-Fold (272, 292, 302, 312VBH, 343VBH, 343VIB)  
Furrion Observation/Backup Camera  
MaxxAir Fan in Master Br. (N/A w/2nd A/C)  
RVIA Seal · RVIA/QAI/Canadian Standard  
State Seal (NE & WA)  
\*Included in 1.5 Elite Package

Doe Décor

# EXTERIOR FEATURES



LevelMate PRO lets you level your unit on the first try! This feature calculates and displays the height required to achieve a perfectly level position.



SportTrek Touring's Weather Shield features a radiant foil barrier, forced heat, enclosed underbelly, and enclosed gate valves.



SPORTTREK TOURING CONSTRUCTION



985 N 900 W | Shipshewana, IN 46565 | [www.venture-rv.com](http://www.venture-rv.com)

Due to continual research and advances, manufacturer reserves the right to change specifications, design, price, and equipment without notice, and assumes no responsibility for any error in this literature.

Some items shown are not included as standard or optional equipment.

©2024 Venture | 4/15/24 | web